

UrbanPlot

Planting Design Plans

Client: J Bloggs

Location: Hitchin



Planting Notes

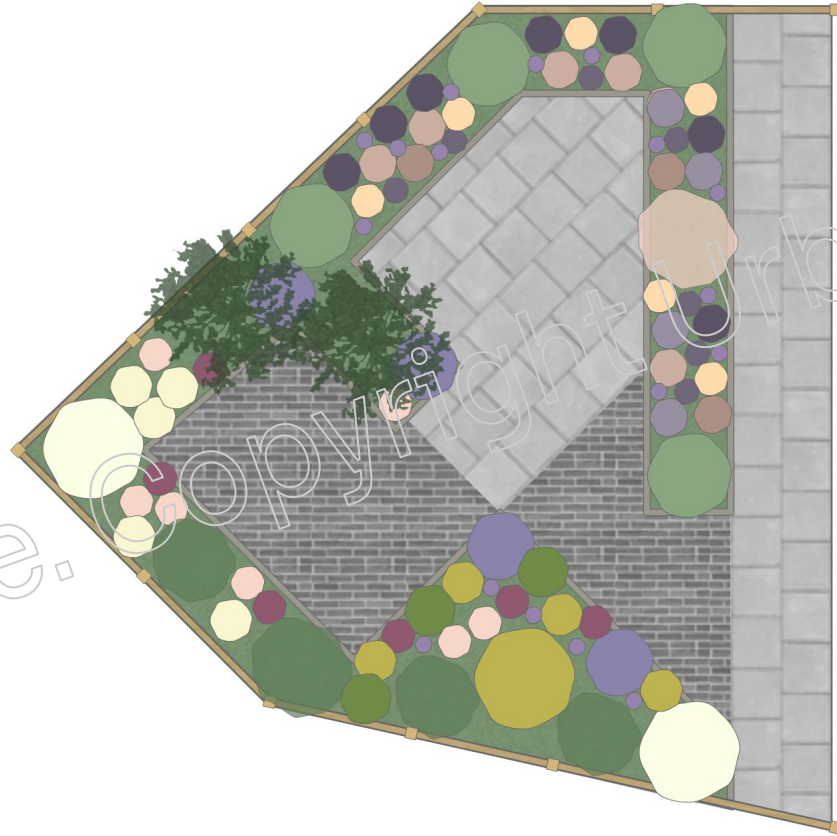
- The two key shrubs (Laurel & Salix - species undetermined. Please send close up pictures of the leaves for identification and specific advice), have been incorporated into the design. The salix may need to be moved a metre into the new divider bed. This will provide excellent screening to divide the dining and lounging area.
- The 3x roses and Jasmine have also been kept in the southern border and interspersed with new complimentary plants
- The planting scheme is designed for a drier garden conditions and is low maintenance whilst maximising flower colour
- The plants have been selected to provide height and structure, which will make the garden feel bigger by hiding the edges and the shape of the garden
- The planting is designed to be natural and flowing enveloping the dining and lounging areas
- There is year round interest across the selected plants starting with the Hellebore at the beginning of the year to the alliums in Spring right through to the Sedum and Agastache into Autumn. The Miscanthus grasses also provide year round structure
- The colour scheme combines soft pink, purple and peach colours with pops of complimentary yellows and darker contrasting maroons which will bring out the vibrancy of the adjacent plants

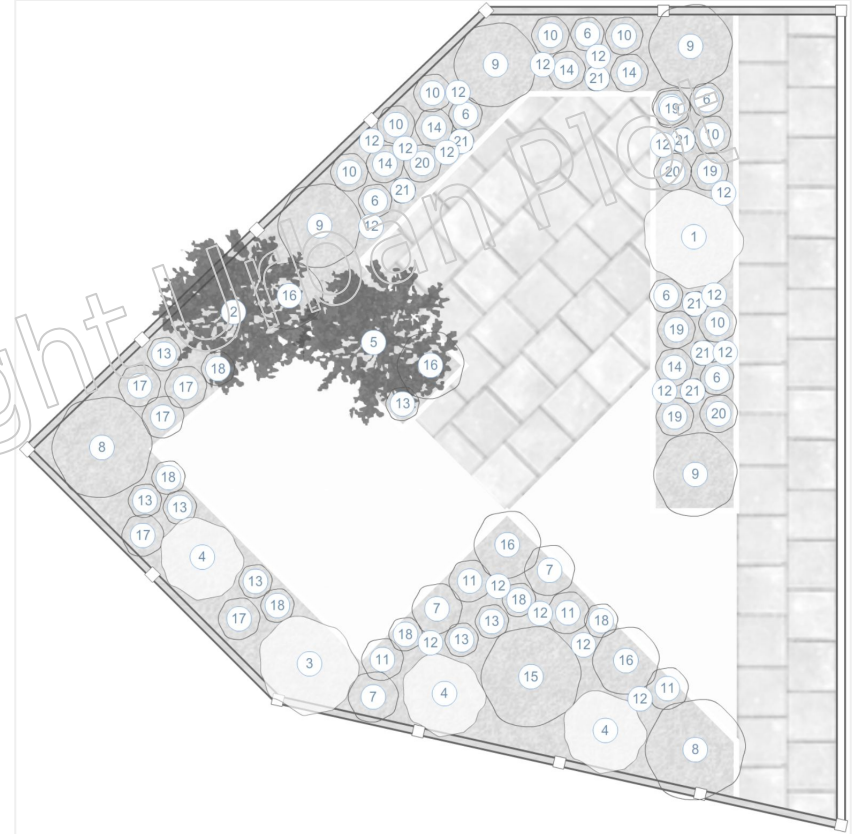
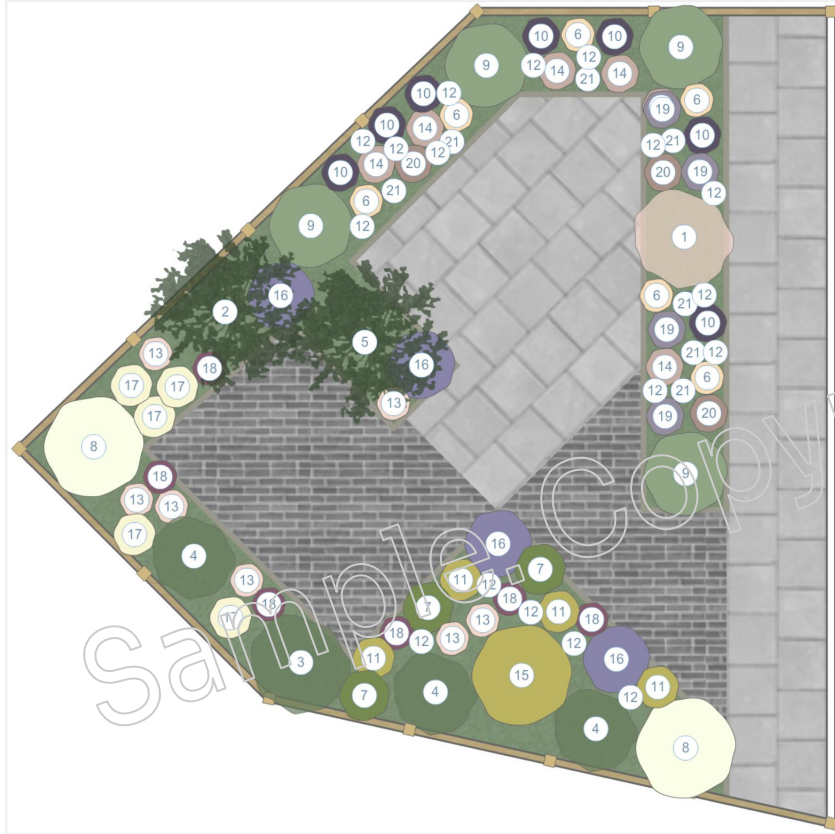
Garden Conditions













- **Border direction:** Mixed
- **Sun levels:** Full sun 90%, part shade 10%
- **Soil type:** clay, dry under shrubs on back border
- **Soil moisture:** Moist but well drained
- **Border size:** Various
- **Border aspect:** Various

Client Requirements

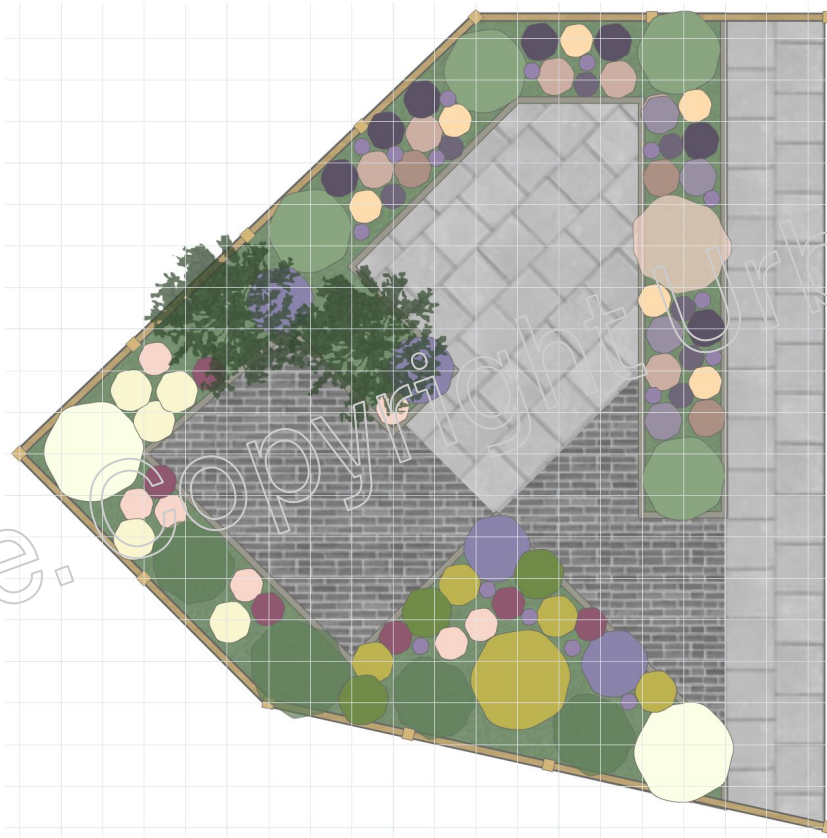
- **Existing plants to remain:** None
- **Colour palette:** Open to suggestions
- **Style:** Natural free flowing planting, bee/insect friendly
- **Care level:** low-maintenance
- **Favourite flowers:** None specifically
- **Pests:** slugs can be a problem





	No.	Quantity	Title	Width	Length
	1	1	Client Plant - Fuchsia 'Whiteknights Pearl' (Assumption)	1.2m	1.2m
	2	1	Existing Laurel (species unknown)	2m	2m
	3	1	Existing Plant - 'Night Jasmine' (species not determined)	1.2m	1.2m
	4	3	Existing Plant - Rose (species not determined)	1m	1m
	5	1	Existing Salix (species unknown)	2m	2m
	6	6	Achillea 'Terracotta'	0.4m	0.4m
	7	3	Hakonechloa macra	0.6m	0.6m
	8	2	Hydrangea paniculata 'Limelight'	1.2m	1.2m
	9	4	Miscanthus sinensis 'Morning Light'	1m	1m
	10	7	Agastache 'Blackadder'	0.45m	0.45m
	11	4	Aichemilla mollis	0.5m	0.5m
	12	17	Allium giganteum	0.2m	0.2m

	No.	Quantity	Title	Width	Length
	13	7	Astrantia major 'Roma'	0.4m	0.4m
	14	6	Echinacea purpurea 'Magnus'	0.45m	0.45m
	15	1	Euphorbia characias subsp. wulfenii	1.2m	1.2m
	16	4	Geranium x magnificentum	0.8m	0.8m
	17	5	Helleborus x hybridus Harvington yellow speckled	0.5m	0.5m
	18	6	Heuchera 'Palace Purple'	0.4m	0.4m
	19	4	Lavandula angustifolia 'Hidcote'	0.45m	0.45m
	20	3	Sedum 'Autumn Joy'	0.45m	0.45m
	21	7	Verbena bonariensis 'Lollipop'	0.3m	0.3m



Sample. Copyright Urban Plot

Each square on grid
50cm x 50cm

Hakonechloa macra

Common Name: Japanese forest grass

Planting Plan Number: 1

Quantity Needed: 1




Plant Info	
Type	Grass
Sunlight	Full Sun / Part Shade / Shade
Ultimate Height (m)	0.5
Ultimate Spread (m)	0.5
UK Hardiness	Fully Hardy
Soil Moisture	Moist, but well-drained
Evergreen/Deciduous	Deciduous
Drought Tolerant	No

Season of Interest						Flowering Notes
Plant	Spring	Summer	Autumn	Winter		
Flower						Delicate flower spikes in summer Leaves turn maroon in autumn
Leaves						
Care Calendar						Care Notes
Action	Spring	Summer	Autumn	Winter		
Prune/Cutback					Cut back old, flowered stems and dead foliage at the base in late winter Divide in spring when new shoots appear Mulch annually with compost	
Propagate						
Mulch						

Hydrangea paniculata 'Limelight'

Common Name: panicled hydrangea 'Limelight'

Planting Plan Number: 2

Quantity Needed: 1




Plant Info	
Type	Shrub
Sunlight	Full Sun / Part Shade
Ultimate Height (m)	1.5
Ultimate Spread (m)	1.5
UK Hardiness	to -15
Soil Moisture	Moist, but well-drained / Well-drained
Evergreen/Deciduous	Deciduous
Drought Tolerant	No

Season of Interest						Flowering Notes
Plant	Spring	Summer	Autumn	Winter		
Flower						Gorgeous large flowers go from acid green to white to pink through year Dark green, drop in early winter
Leaves						
Care Calendar						Care Notes
Action	Spring	Summer	Autumn	Winter		
Prune/Cutback					Cut back by a third in early spring. Optional Chelsea chop end of May to <small>delay flowering</small> Cuttings: softwood in summer, hardwood in winter improve chalky soils with compost/manure	
Propagate						
Mulch						

Geum 'Totally Tangerine'

Common Name: Avenis

Planting Plan Number: 3

Quantity Needed: 3



Plant Info	
Type	Perennial
Sunlight	Full Sun / Part Shade
Ultimate Height (m)	0.6
Ultimate Spread (m)	0.5
UK Hardiness	Fully Hardy
Soil Moisture	Moist, but well-drained / Well-drained
Evergreen/Deciduous	Evergreen
Drought Tolerant	No

Season of Interest						Flowering Notes
Plant	Spring	Summer	Autumn	Winter		
Flower						Profusion of delicate orange flowers Compact clump forming habit
Leaves						
Care Calendar						Care Notes
Action	Spring	Summer	Autumn	Winter		
Prune/Cutback					Cutback fade flowers in spring for second flowering Divide in spring Mulch in spring	
Propagate						
Mulch						

Penstemon 'Garnet'

Common Name:

Planting Plan Number: 4

Quantity Needed: 4



Plant Info	
Type	Perennial
Sunlight	Full Sun / Part Shade
Ultimate Height (m)	0.8
Ultimate Spread (m)	0.5
UK Hardiness	Fully Hardy
Soil Moisture	Moist, but well-drained
Evergreen/Deciduous	Deciduous
Drought Tolerant	No

Season of Interest						Flowering Notes
Plant	Spring	Summer	Autumn	Winter		
Flower						Tubular bell-shaped, deep wine flowers Narrow, dark foliage
Leaves						
Care Calendar						Care Notes
Action	Spring	Summer	Autumn	Winter		
Prune/Cutback					Deadhead faded flowers. Cut back to base in early spring Divide in spring Overwinter with a dry winter mulch	
Propagate						
Mulch						

Achillea 'Terracotta'

Common Name: yarrow 'Terracotta'

Planting Plan Number: 5

Quantity Needed: 3



Plant Info	
Type	Perennial
Sunlight	Full Shade
Ultimate Height (m)	1.2
Ultimate Spread (m)	0.5
UK Hardiness	Fully Hardy
Soil Moisture	Moist, but well-drained / Well-drained
Evergreen/Deciduous	Semi-Evergreen
Drought Tolerant	No

Season of Interest						Flowering Notes
Plant	Spring	Summer	Autumn	Winter		
Flower						Long flowering umbellifer flowers from June to September
Leaves						Feathery, silvery grey-green leaves
Care Calendar						Care Notes
Action	Spring	Summer	Autumn	Winter		
Prune/Cutback					Cut back untidy foliage in spring	
Propagate					Divide in spring	
Mulch						Not required

Stipa tenuissima

Common Name:

Planting Plan Number: 6

Quantity Needed: 4



Plant Info	
Type	Grass
Sunlight	Full Sun / Part Shade
Ultimate Height (m)	1
Ultimate Spread (m)	0.5
UK Hardiness	to -10
Soil Moisture	Moist, but well-drained / Well-drained
Evergreen/Deciduous	Deciduous
Drought Tolerant	Yes

Season of Interest						Flowering Notes
Plant	Spring	Summer	Autumn	Winter		
Flower						Narrow arching panicles in summer
Leaves						Delicate feathery leaves add structure
Care Calendar						Care Notes
Action	Spring	Summer	Autumn	Winter		
Prune/Cutback					Leave leaves over winter and cut back early spring	
Propagate					Division - early spring	
Mulch						Not required

Phormium 'Jester'

Common Name: New Zealand Flax

Planting Plan Number: 7

Quantity Needed: 12



Plant Info	
Type	Grass
Sunlight	Full Sun / Part Shade
Ultimate Height (m)	1
Ultimate Spread (m)	1.2
UK Hardiness	Fully Hardy
Soil Moisture	Well-drained
Evergreen/Deciduous	Evergreen
Drought Tolerant	Yes

Season of Interest						Flowering Notes
Plant	Spring	Summer	Autumn	Winter		
Flower						No flowers colour from leaves
Leaves						Thick architectural leaves
Care Calendar						Care Notes
Action	Spring	Summer	Autumn	Winter		
Prune/Cutback					Cutback dead/brown leaves in spring	
Propagate					Divide in late autumn or early spring	
Mulch						Not required

Miscanthus sinensis 'Morning Light'

Common Name: Maiden Grass

Planting Plan Number: 8

Quantity Needed: 2



Plant Info	
Type	Grass
Sunlight	Full Sun
Ultimate Height (m)	2
Ultimate Spread (m)	2
UK Hardiness	Fully Hardy
Soil Moisture	Moist, but well-drained / Well-drained
Evergreen/Deciduous	Deciduous
Drought Tolerant	Yes

Season of Interest						Flowering Notes
Plant	Spring	Summer	Autumn	Winter		
Flower						
Leaves						Delicate architectural leaves
Care Calendar						Care Notes
Action	Spring	Summer	Autumn	Winter		
Prune/Cutback						
Propagate						
Mulch						

Geranium x magnificum

Common Name:
purple cranesbill

Planting Plan Number
9

Quantity Needed
3



Plant Info	
Type	Perennial
Sunlight	Full Sun / Part Shade
Ultimate Height (m)	0.5
Ultimate Spread (m)	1
UK Hardiness	Fully Hardy
Soil Moisture	Moist, but well-drained / Well-drained
Evergreen/Deciduous	Deciduous
Drought Tolerant	No

Season of Interest						Flowering Notes
Plant	Spring	Summer	Autumn	Winter		
Flower		█				
Leaves		█	█			
Care Calendar						Care Notes
Action	Spring	Summer	Autumn	Winter		
Prune/Cutback		█			Remove fading leaves mid-summer for fresh growth a few weeks later	
Propagate	█		█		Divide between autumn & spring	
Mulch	█					

Hebe 'Blue Clouds'

Common Name:

Planting Plan Number
10

Quantity Needed
1



Plant Info	
Type	Shrub
Sunlight	Full Sun / Part Shade
Ultimate Height (m)	1
Ultimate Spread (m)	1
UK Hardiness	to -10
Soil Moisture	Moist, but well-drained / Well-drained
Evergreen/Deciduous	Evergreen
Drought Tolerant	Yes

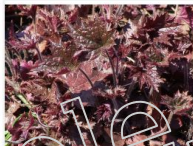
Season of Interest						Flowering Notes
Plant	Spring	Summer	Autumn	Winter		
Flower		█	█			Flowers are more purple than blue. Loved by bees
Leaves	█	█	█	█	█	Provides year-round architectural interest
Care Calendar						Care Notes
Action	Spring	Summer	Autumn	Winter		
Prune/Cutback			█		Pruning not required but can be shaped in late summer if required	
Propagate		█			Cuttings in late summer/autumn	
Mulch						Not required

Heuchera 'Palace Purple'

Common Name:
alum root 'Palace Purple'

Planting Plan Number
11

Quantity Needed
3



Plant Info	
Type	Perennial
Sunlight	Full Sun / Part Shade
Ultimate Height (m)	0.5
Ultimate Spread (m)	0.5
UK Hardiness	to -20
Soil Moisture	Moist, but well-drained
Evergreen/Deciduous	Semi-Evergreen
Drought Tolerant	Yes

Season of Interest						Flowering Notes
Plant	Spring	Summer	Autumn	Winter		
Flower		█				Delicate pink/white spikes
Leaves	█	█	█	█	█	Leaves may need tidying as they die-back
Care Calendar						Care Notes
Action	Spring	Summer	Autumn	Winter		
Prune/Cutback		█			Remove faded flower spikes & leaves	
Propagate			█		Divide in autumn	
Mulch	█					Mulch annually

Secum 'Autumn Joy'

Common Name:

Planting Plan Number
12

Quantity Needed
1



Plant Info	
Type	Perennial
Sunlight	Full Sun
Ultimate Height (m)	0.8
Ultimate Spread (m)	0.4
UK Hardiness	Fully Hardy
Soil Moisture	Well-drained
Evergreen/Deciduous	Deciduous
Drought Tolerant	Yes

Season of Interest						Flowering Notes
Plant	Spring	Summer	Autumn	Winter		
Flower		█	█			Late flowering from late summer to autumn
Leaves	█	█	█	█	█	Leaves store water
Care Calendar						Care Notes
Action	Spring	Summer	Autumn	Winter		
Prune/Cutback			█		Cut back faded flowers or leave for structure over winter	
Propagate	█				Divide in spring	
Mulch						Not required

Thank you for your custom. We
hope you enjoy your new garden.

If you have any questions or feedback please
reply to the email you received or contact us at
hello@urbanplot.co.uk

